

Linovision

4K UltraHD Explosion Proof POE IP
Camera
IPC608EX
User Guide (V1.0/2026-6-23)

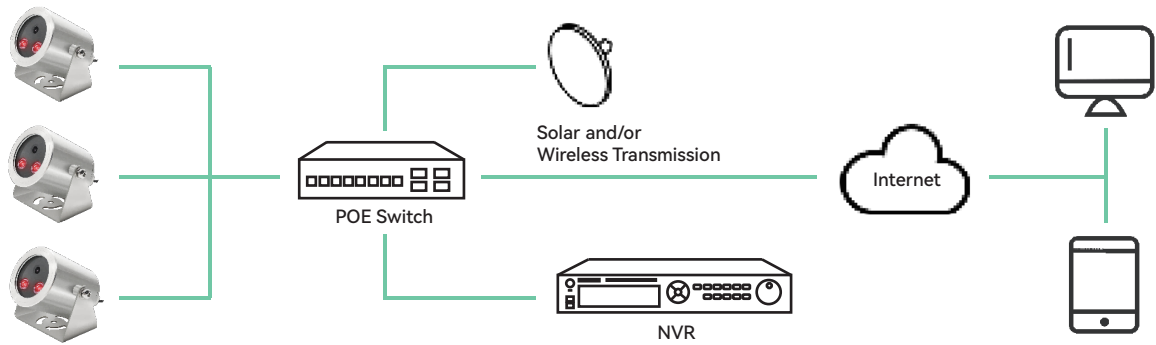
Contents

1.Connection Guide	1
2.Access Camera from WEB Browser	1
3.Access Camera via NVR	4
4.Access Camera from GUARD STATION - CMS Software	7
5.Access Camera from Guard Viewer - Mobile Phone App	8

Connection Guide

It is an overall connection application diagram, explosion-proof camera, PoE Switch, PC ,NVR, Smart Phone, etc. Please see below.

Note: the camera also support DC12V power supply.



Access Camera from WEB Browser

1 Download EZTools software

Before you access camera from WEB Browser, please download the EZTools software to check the Camera IP address.

Software download link and QR code:

<https://app.box.com/s/922sqty5vz4qb1ei3x5k4fnqrzoxgftp>



2 Find the Camera IP address

As long as the camera and the computer are in the same network, the camera will show in the device list.

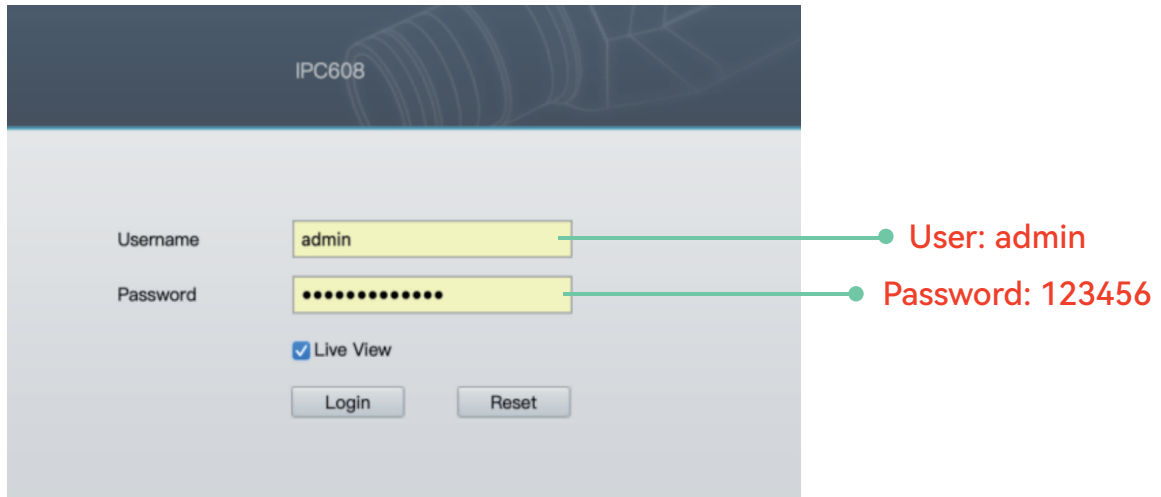
The screenshot shows the EZTools web interface. The top bar indicates 'Total 5 device(s)' and includes 'Refresh' and 'Search Setup' buttons. The left sidebar has navigation options: Device Cfg., Channel Cfg., Upgrade, and Maintenance. The main area shows a table of devices with columns for Device Name, IP, Model, Version, Device Status, Operation, and Operation Status. The device 'IPC608' is highlighted with a red box.

Device Name	IP	Model	Version	Device Status	Operation	Operation Status
IPC7PT6	192.0.0.15	IPC7PT6		Not logged in	IP	..
IPC608	192.0.0.45	IPC608	IPC_G6107-80001P91D1806	Not logged in	IP	..
General	192.0.0.55	IP_Camera		Not logged in	IP	..
Dahua	192.0.0.106	IPC-HFW4100E		Not logged in	IP	..
DS-2CD2032-I	192.168.254.2	DS-2CD2032-I		Not logged in	IP	..

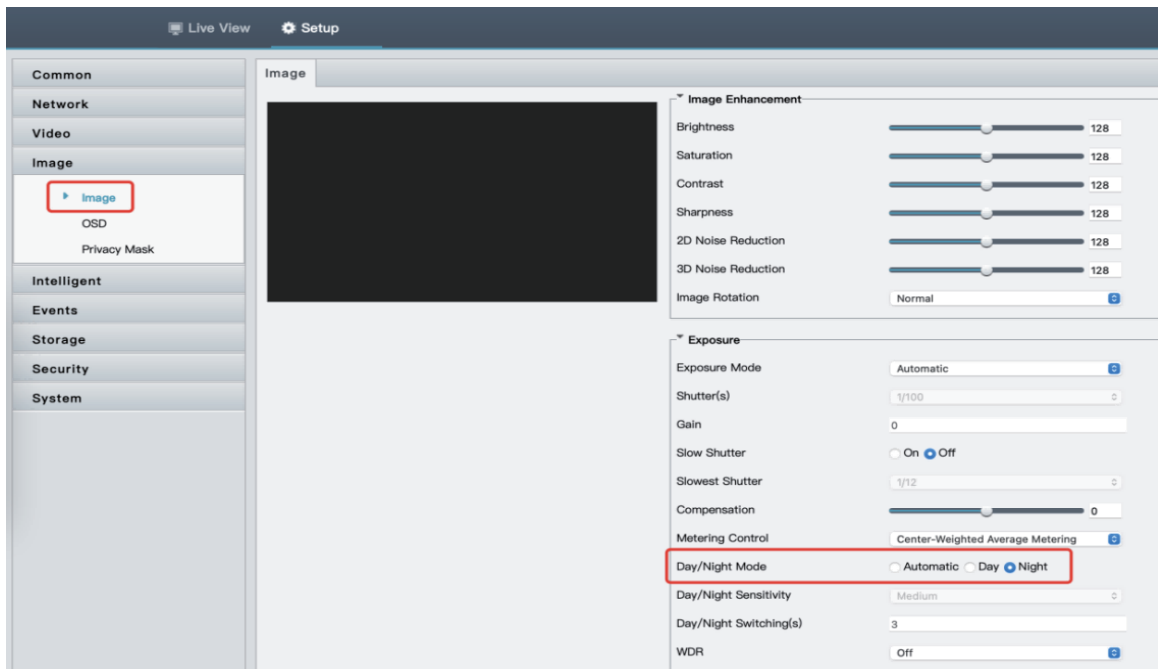
3 Log In

Open the IE browser, enter the IP address of the camera, log in with the following initial information, then you can view and set the camera.

Noted: If computer software or NVR connect to the camera via the ONVIF protocol, and images can't appear, please try to adjust the camera video encoding: H.264/MJPEG/H.265/H.265+.

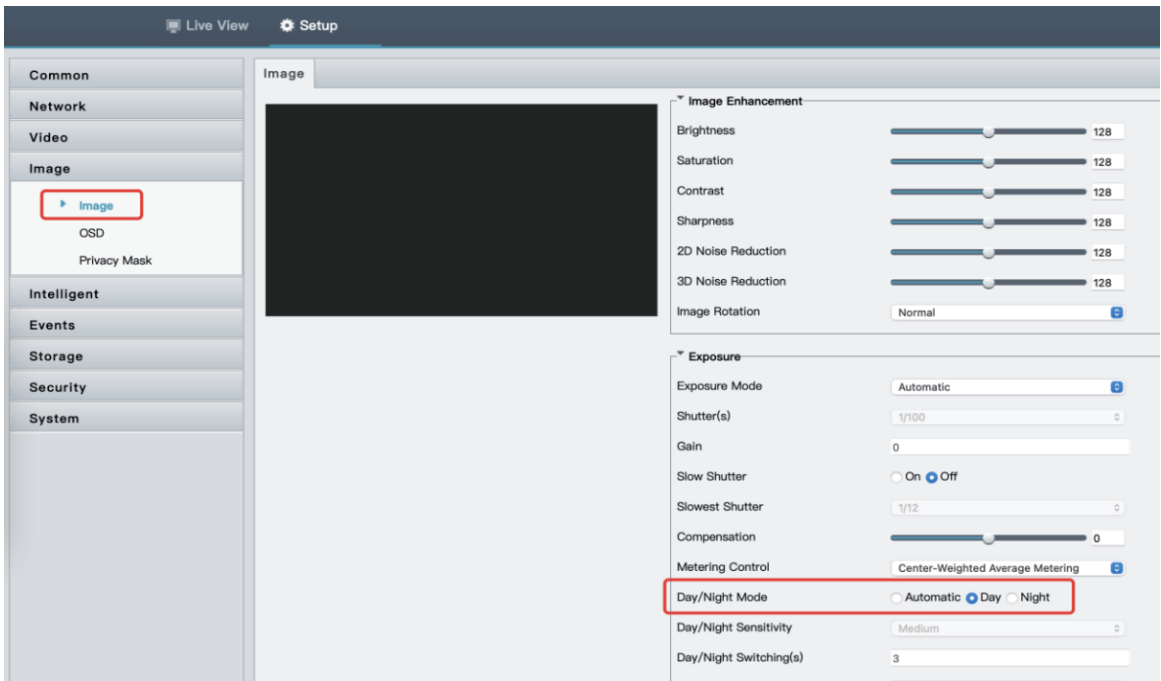


4 LED Light Control



Open the LED light

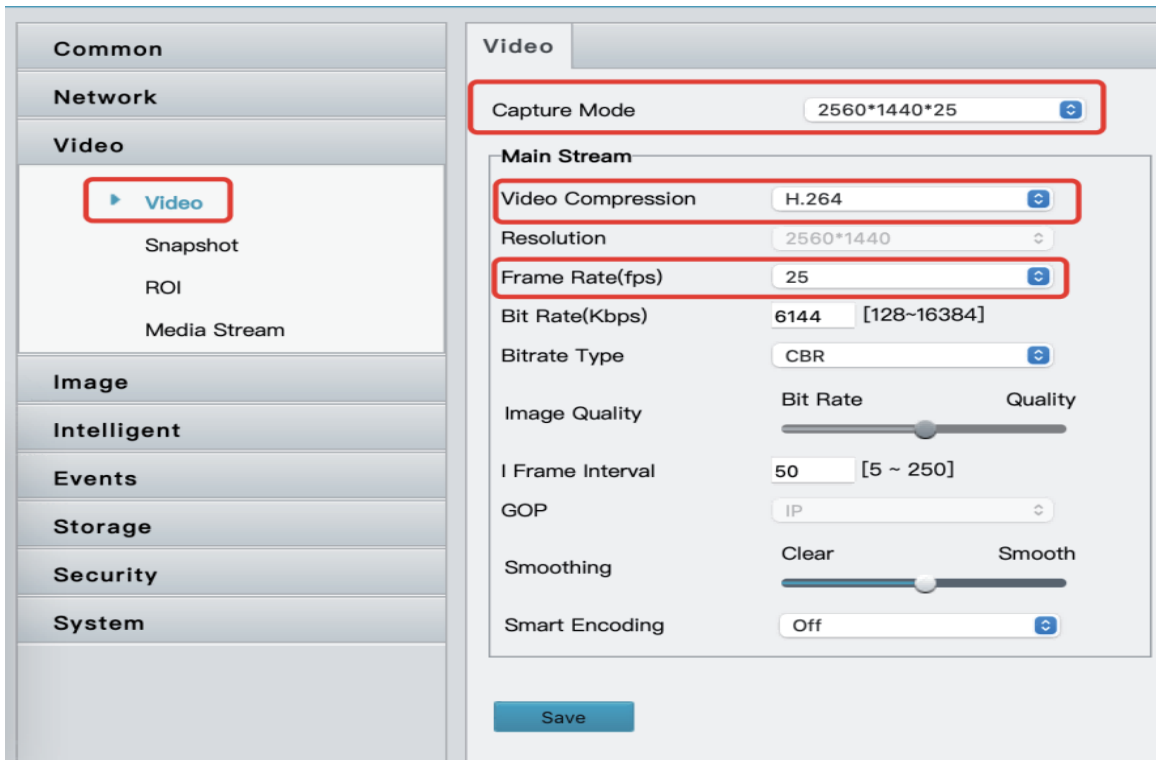
When the environment is dark, click the “Image” and switch to “Night” mode in Day/Night Mode, the LED light will be turned on.



Close the LED light

When the environment is bright, click the “Image” and switch to “Day” mode, the LED light will be turned off.

5 Adjust the Video Compression, Image Resolution and Frame Rate.



Access Camera via NVR

Ensure the camera has been connected, then do the following steps.

Note:The following information takes the camera IP address: 192.168.1.88 as an example.

- 1 Click the right mouse button, choose the “Common Menu” and “Network”.

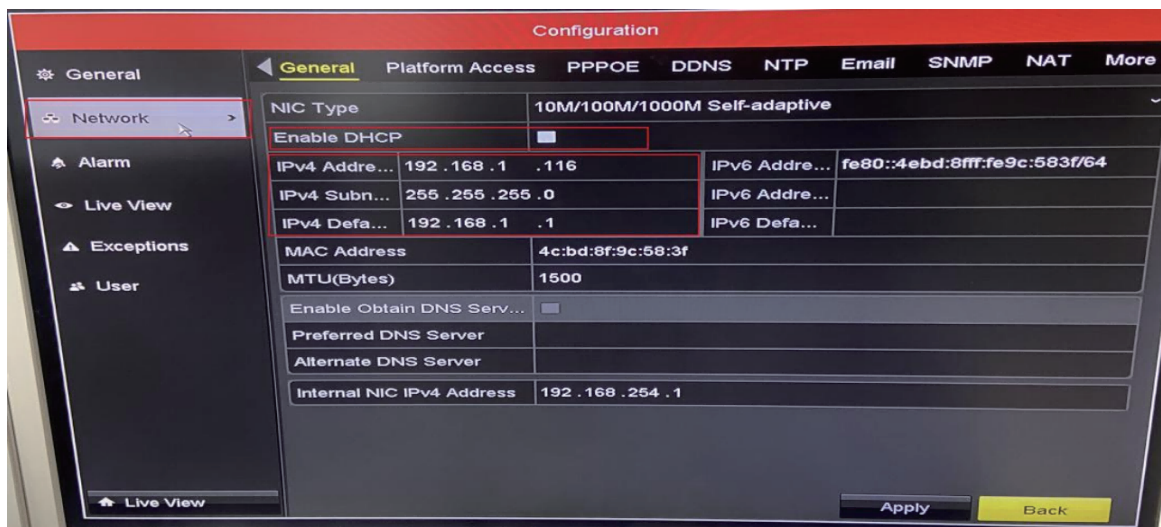


- 2 Cancel DHCP and enter “IPv4 Address / IPv4 Subnet Mask / IPv4 Default Gateway”.

IPv4 Address: 192.168.1.xxx (0-255)

IPv4 Subnet Mask: 255.255.255.0

IPv4 Default Gateway: 192.168.1.1



Noted: The camera is DHCP, when using with NVR, the NVR IP address needs to be changed to the same network segment as the camera.

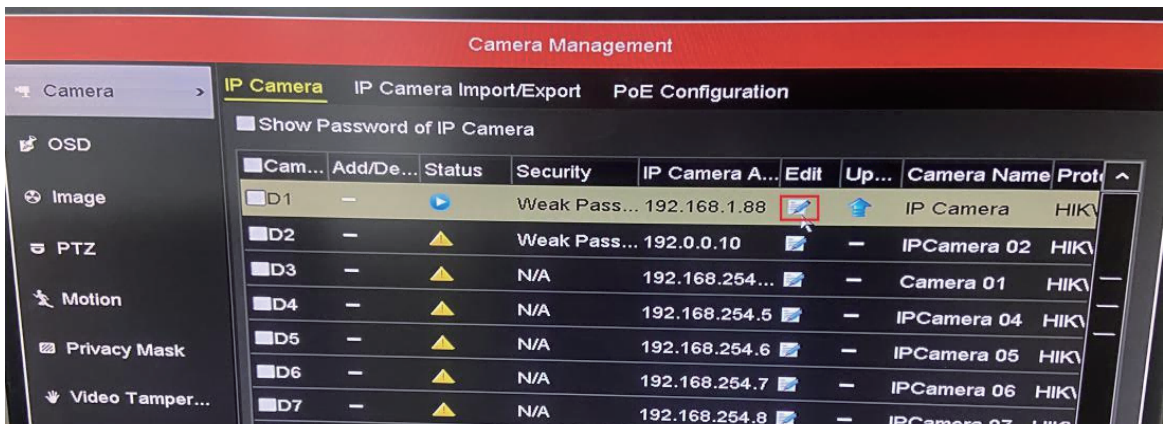
- 3 Click the right mouse button and choose the “Menu”.



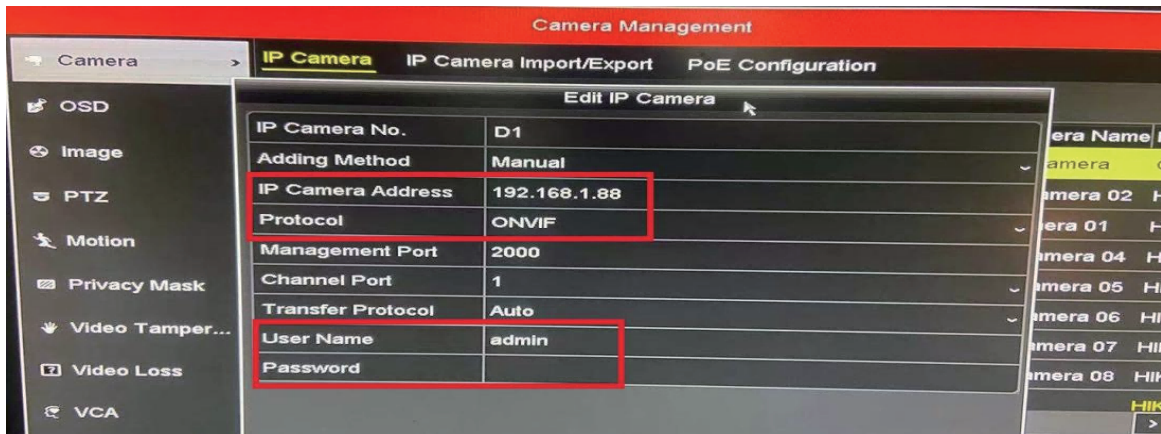
- 4 Click the “Camera”.



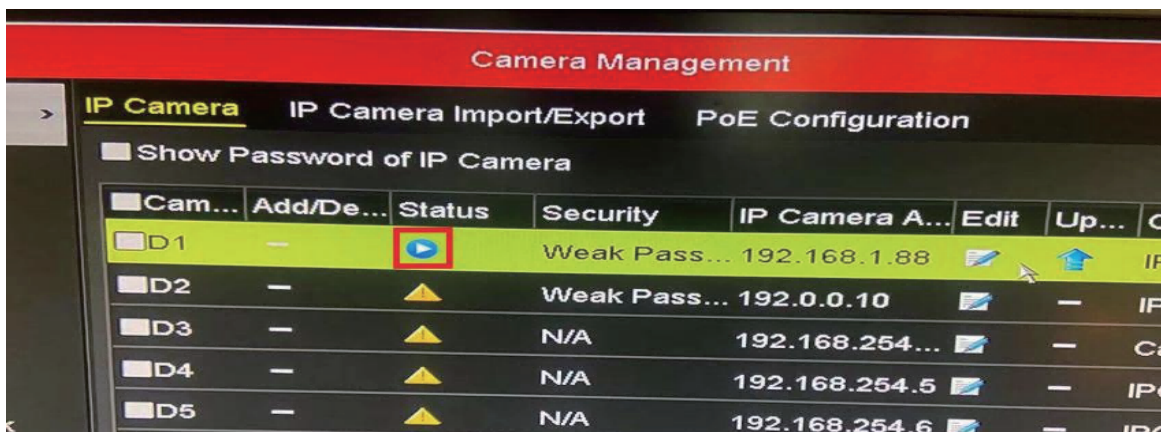
- 5 Find the camera and click the “blued pencil”.



- 6 Enter the “IP Camera Address/Protocol/User Name/Password”
IP Camera Address: 192.168.1.88
Protocol: ONVIF
User Name: admin
Password: 123456



- 7 After successful addition, the Status will display a blue icon.



- 8 Click the left mouse button to preview the image.



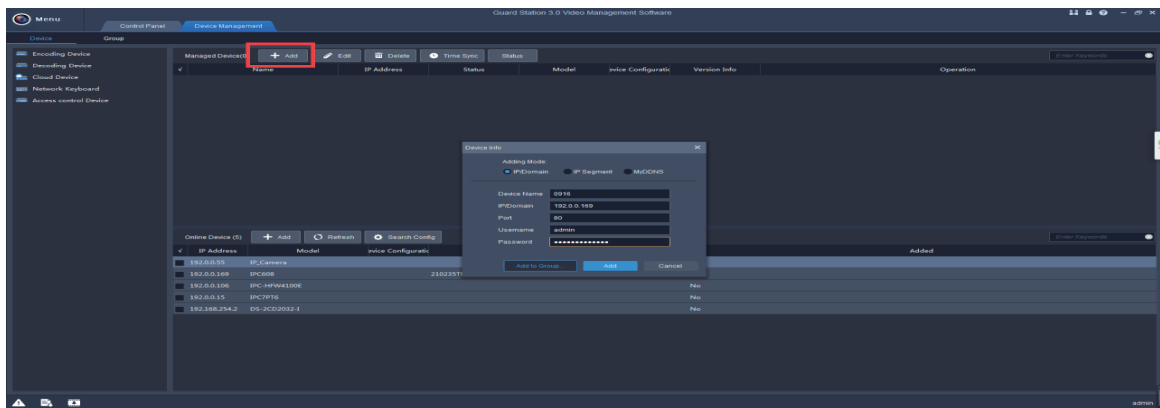
Noted: If computer software or NVR connect to the camera via the ONVIF protocol, and images can't appear, please try to adjust the camera video encoding: H.264/MJPEG/H.265/H.265+.

Access Camera from GUARD STATION - CMS Software

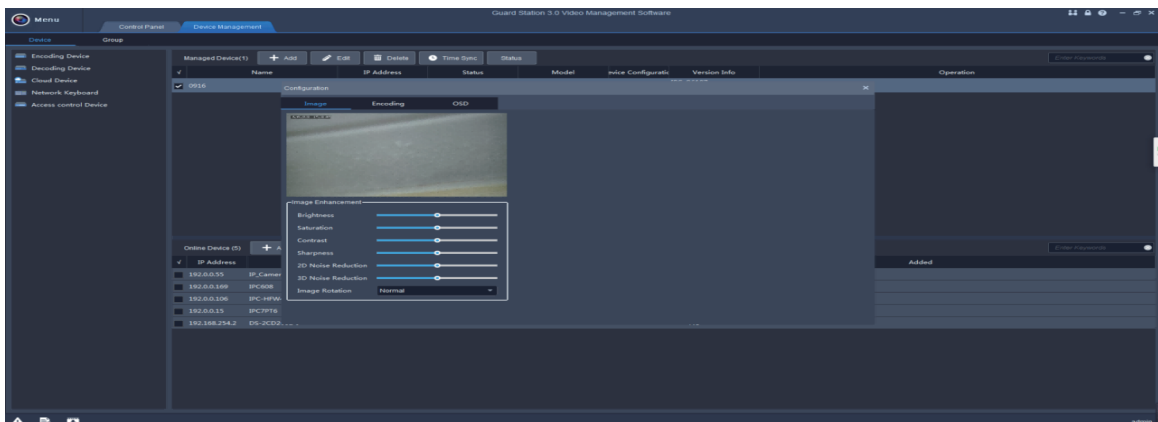
- 1 Software download address and QR code.**
Windows: <https://app.box.com/s/922sqty5vz4qb1ei3x5k4fnqrzoxgftp>
MAC: <https://app.box.com/s/l9riil986jgo6jkwa3zos8ksdzt52sgi>



- 2 After the installation is complete, open the software and add the camera.**
Guard Station Initial Information:
User Name: admin
Password: 123456



- 3 Modify the camera parameters through GUARD STATION.**



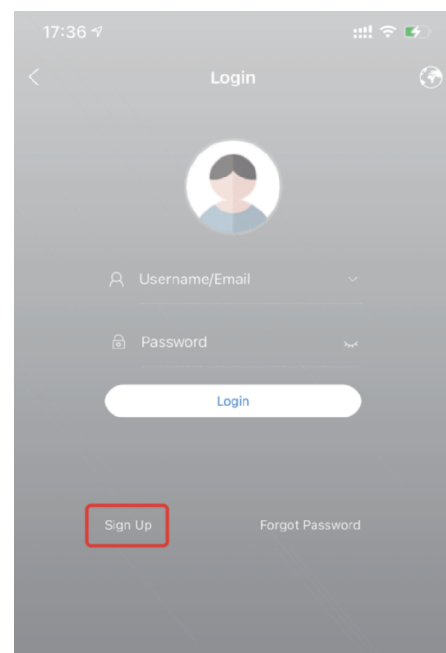
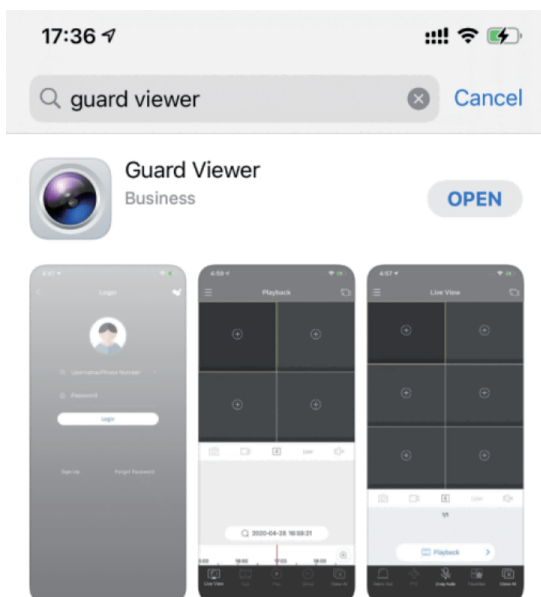
4 Check the real-time video of the camera.



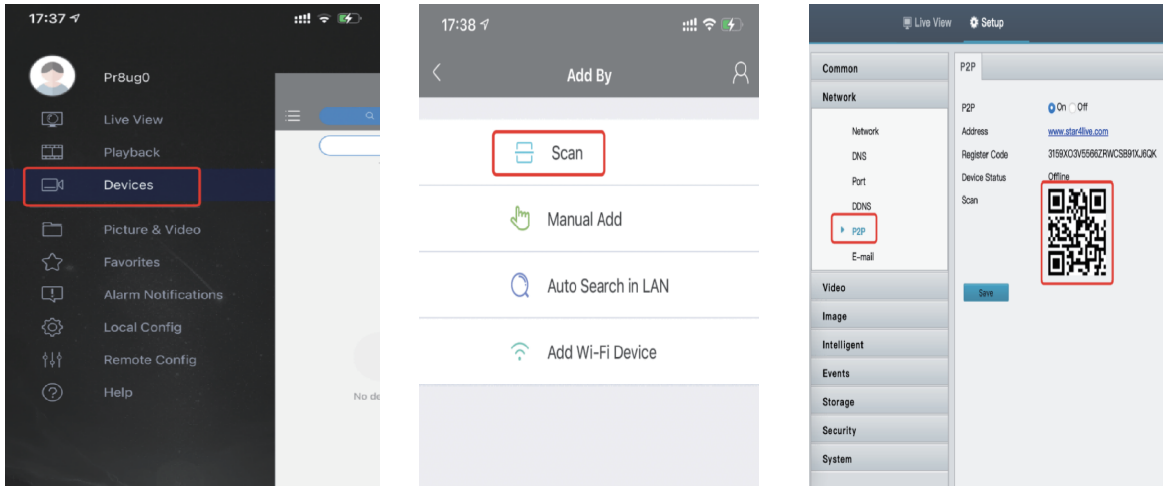
Access Camera from Guard Viewer – Mobile Phone App

1 Through the mobile phone app -- “Guard Viewer”, you can watch the camera view remotely. Please search Guard Viewer in the Apple Store or Android vvMarket, then download and install it.

2 Click the “Sign Up” to create a new account and login with your account.



3 Click "Devices", then "Scan", scan the QR code from the camera web browser.



4 After adding the camera, then go to "Live View" to watch the camera live video.

