

## POE-SW503GDF

Mini Solar PoE Switch



## Outstanding Features

### Core Functionality

- DC 9–57V wide voltage input with built-in voltage booster, compatible with DC 12V / 24V solar battery systems.
- 1× IEEE802.3af/at PoE+ port (up to 30W) and 1× Passive 24V PoE port for flexible power options.
- SFP port supports Gigabit connectivity; can be converted to RJ45 via SFP-GE-RJ45 module.
- Full Gigabit switching with 10/100/1000 Mbps auto-negotiation on all ports.

### Industrial-Grade Design

- Rugged full-metal enclosure with DIN-rail mounting support.
- Compact size: 83 × 63 × 25.8 mm (3.27 × 2.48 × 1.02 in).
- Wide operating temperature range for harsh environments.

### Applications & Benefits

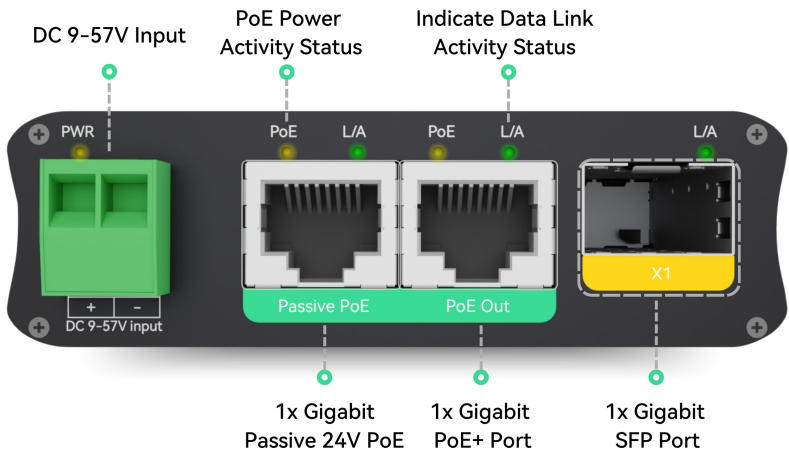
- Designed for solar-powered surveillance, RV networks, farm security, and remote monitoring applications.
- Powers wireless bridges, IP cameras, and other PoE or passive PoE devices without extra injectors.
- Ideal for space-constrained installations such as solar control boxes and outdoor enclosures.

## Specifications

Mechanical	
Enclosure Material	Aluminum
Dimensions (WxDxH)	83 × 63 × 25.8 mm (3.27 × 2.48 × 1.02 in)
Weight	0.13 kg (0.287 lb)
Installation	DIN-rail
Interface	
Network	2 * 10/100/1000 Mbps RJ45 PoE Ports 1 * 1000 Mbps SFP Port
DC Power Input	DC 9-57 V
Ethernet	
PoE Output Ports	Port 1: PoE+, IEEE 802.3af/at, Mode A Default (Pins 1/2 [+], 3/6 [-]), Max 30W, Mode B Optional (Pins 4/5 [+], 7/8 [-]), Max 30W Port 2: Passive PoE, 24 V, (Pins 4/5 [+], 7/8 [-])
Power Consumption	Idle: < 3.5W
MAC Address Table	2K
Packet Length	16 KB
Switching Capacity	6 Gbps
LED Indicators	
PWR	Power
PoE	Power over Ethernet
L/A	Link/Activity
Environment	
Operating Temperature	-40 °C to 75 °C (-40 °F to 167 °F)
Storage Temperature	-40 °C to 85 °C (-40 °F to 185 °F)
Relative Humidity	0% to 95%, non-condensing
Surge Protection	±1.5 kV

Interface

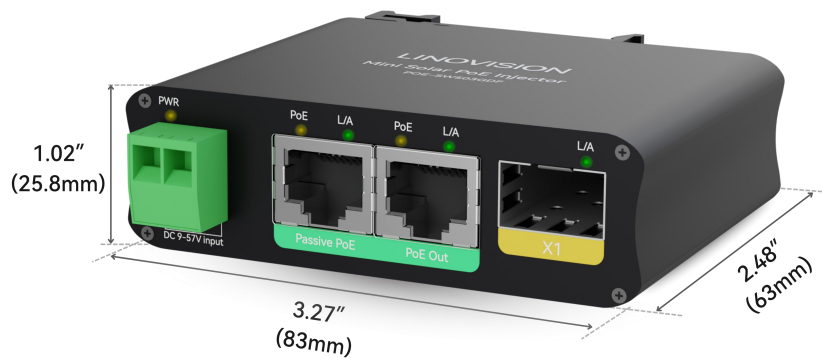
Front View



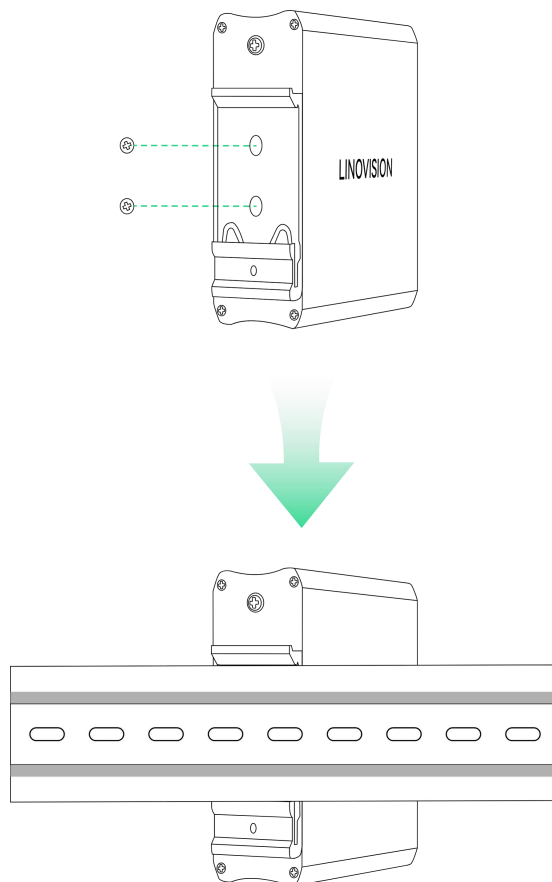
Rear View



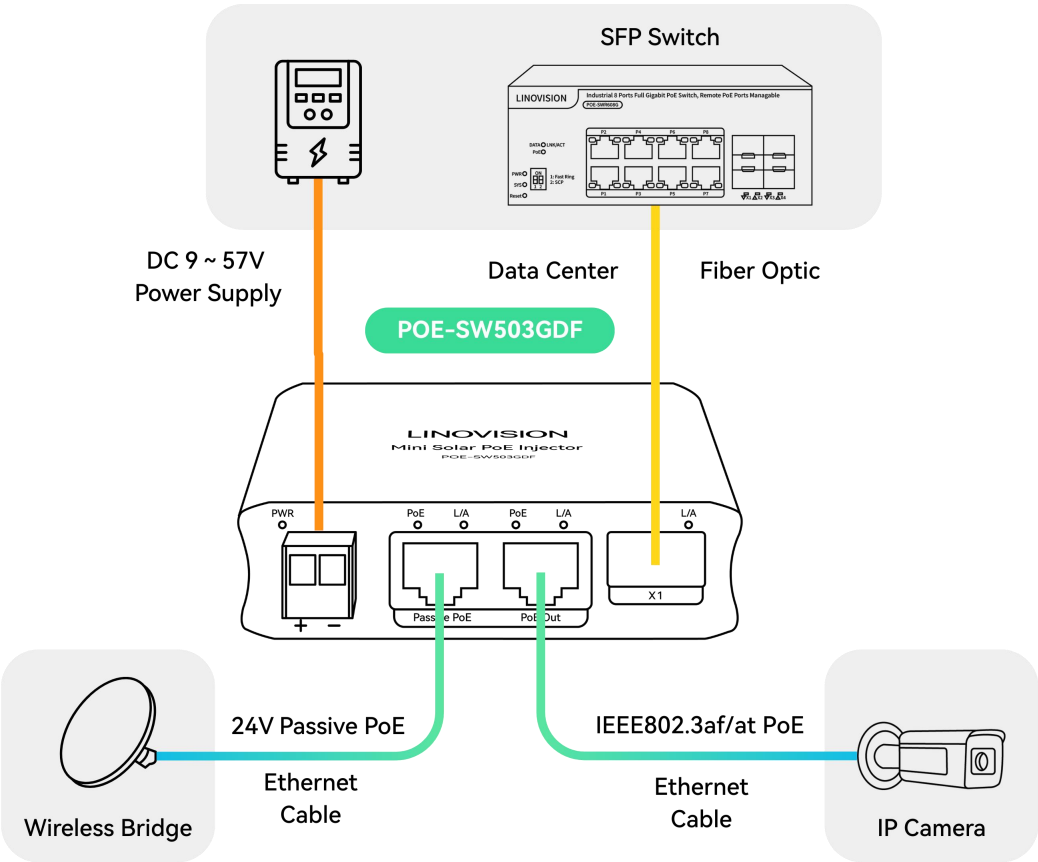
## Dimension



## Installation



Connection Diagram



Package Contents



POE-SW503GDF



DIN-Rail Mounting Accessory



Quick Guide

*\*Disclaimer: Design and specifications are subject to changes without prior notice.*