

LINOVISION

Industrial Full Gigabit PoE Switch
Quick Guide (POE-SW508G2)

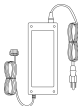
Overview

Industrial 8-Port Full Gigabit Unmanaged PoE Switch has 2 SFP Uplinks and 4 BT 90W PoE Ports. It supports 8-pin simultaneous power supply and PoE Mode A/B output, which is used for PTZ Camera/PoE Lighting/ PoE Monitor.

Package Contents



POE-SW508G2



UL Listed
AC100V~240V to DC48V~56V
Power Adapter



DIN-Rail Mounting
Accessory

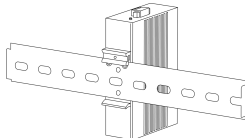
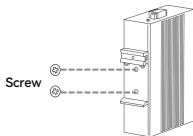


Wall Mounting
Accessory

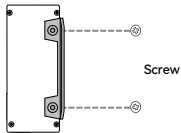
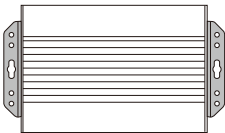


Quick Guide

Installation

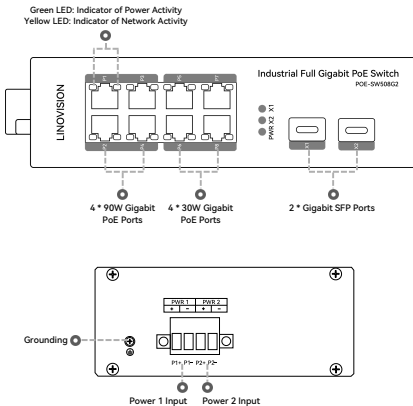


DIN-Rail Mounting



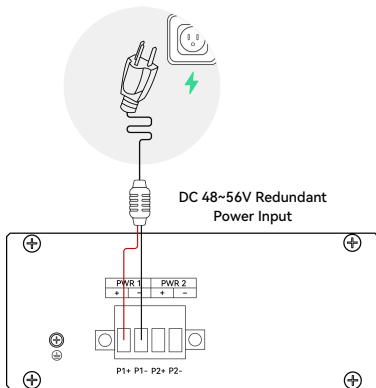
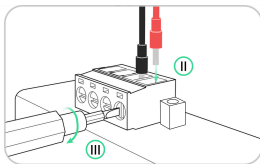
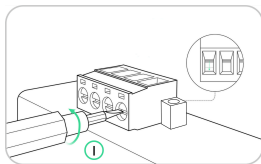
Wall Mounting

Interface



Connect to Power

1. Connect the included **UL Listed 120W power adapter** to the switch's DC Power Input connector.
2. Connect the other end of the power adapter to an AC power outlet.
3. The switch will automatically power on, and the Power LED will light up.



Data Sheet

| Mechanical Specs | |
|------------------------|-------------------------------------------------------------------------------------|
| Dimensions (W*H*D) | 163 × 110 × 46 mm (6.42" × 4.3" × 1.81") |
| Weight | 573 g (1.26 lb) |
| Enclosure | Metal |
| Protection Rating | IP40 |
| Installation | DIN-Rail/Wall Mount |
| Interfaces | |
| Ethernet Port | 8 * 10/100/1000Base-T RJ45 Ports 2 * 1000Base-X SFP Slots |
| Power Supply | 48-56V DC |
| Connector | Removable 4-pin terminal block Pin 1/2 for Power 1 Pin 3/4 for Power 2 |
| LED Indicator | PWR: Power (green) X1, X2: SFP (green) Network Indicator: Link (yellow) |
| Power over Ethernet | |
| PoE Port | Port 1-4: IEEE 802.3af/at/bt PoE++ Max.90 W Port 5-8: IEEE 802.3af/at PoE+ Max.30 W |
| PoE Power Supply Type | End-span |
| Power Pin Assignment | Port 1-4: 1/2/4/5(+), 3/6/7/8(-) Port 5-8: 1/2(+), 3/6(-) |
| PoE Power Budget | 360W (default power supply supports up to 120W) |
| Switching Features | |
| Switch Architecture | Store-and-Forward |
| Switching Capacity | 32 Gbps |
| Packet Forwarding Rate | 16.86 Mbps |

| | |
|------------------------------|---------------------------------------------------------------------------------------------------------------------------------------------------------------------------------------------------------------------------------|
| MAC Address Table | 8 KB |
| Flow Control | IEEE 802.3x pause frame for full duplex Back pressure for half duplex |
| Standards Conformance | |
| Regulatory Compliance | FCC Part15 Class A, CE, ROHS |
| Standard | IEEE802.3i 10 BASE-T IEEE802.3u 100 BASE-TX IEEE802.3ab 1000BASE-T IEEE802.3x Flow Control IEEE802.3af Power over Ethernet IEEE802.3at Power over Ethernet IEEE802.3bt Power over Ethernet IEEE802.3az EEE |
| Environment | |
| Operating Temperature | -40°C to 75°C (-40°F to 167°F) |
| Storage Temperature | -50°C to 85°C (-58°F to 185°F) |
| Operating Humidity | 0% to 95% non-condensing |
| Storage Humidity | 0% to 95% non-condensing |
| Surge Protection | Differential mode ± 2 KV, Common mode ± 6 KV |
| ESD Protection | Contact ± 6 KV, Air ± 8 KV |