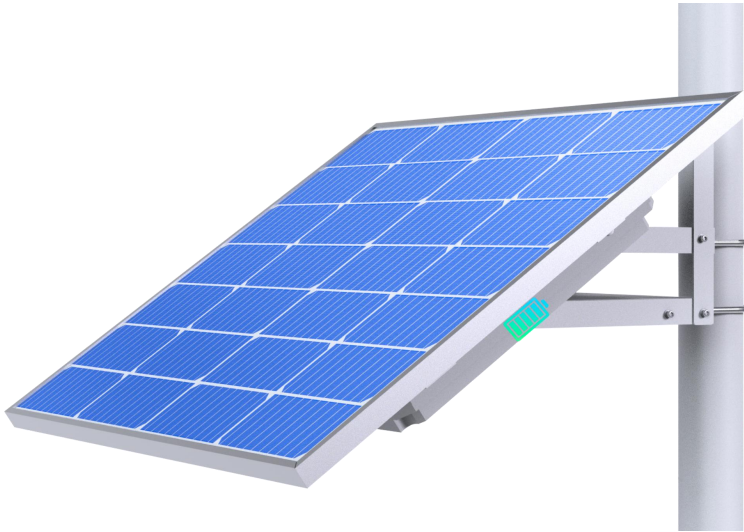


## SOLAR-S1240P100

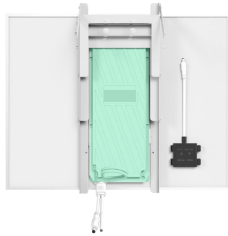
4-in-1 Smart Solar Power System for Security Cameras and IoT Devices



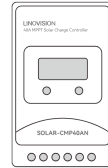
### Outstanding Features

- Fully integrated 4-in-1 design (solar panel, battery, charge controller and bracket).
- 100W monocrystalline solar panel with foldable pole mount bracket.
- 512WH LiFePO4 battery capacity, about 80 hours operation in rainy days.
- Built-in solar charge controller, with DC12V output.
- Anti-corrosion design with Galvanization steel material.
- Work in cold regions, automatic heating below 0°C or 32°F.
- IP66 waterproof for outdoor applications.
- Dimension: 765 mm \* 630 mm \* 98 mm (30.12" \* 24.80" \* 3.85").

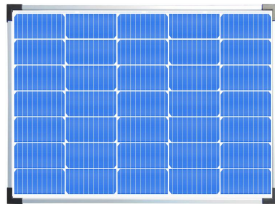
## 4-in-1 Design



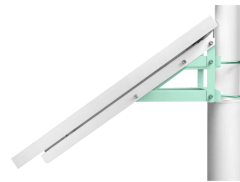
Built-in 512Wh LiFePO4 Battery



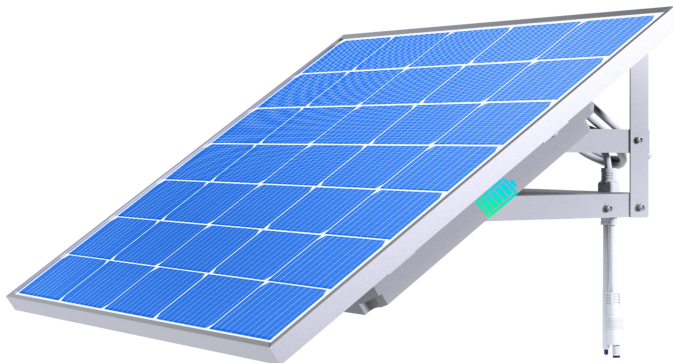
Solar Charge Controller with  
Cloud Monitoring



100W Solar Panel



Integrated Foldable Bracket



**Solar-S1240P100**

*\*Disclaimer: Technical specifications may subject to change without prior notice*

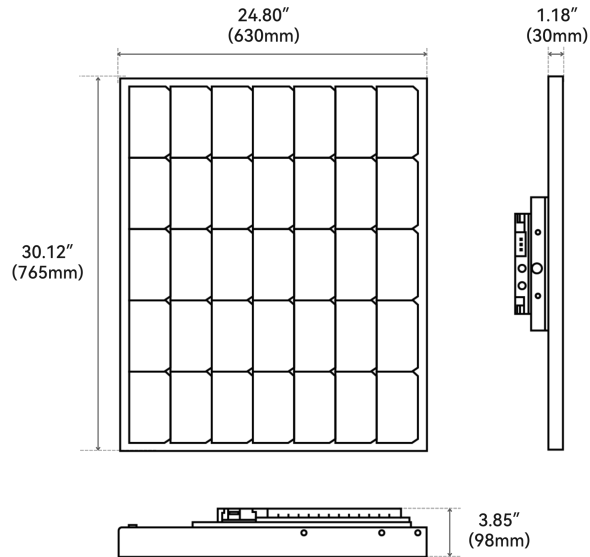
## Specification

<b>System</b>	
Output Voltage	12.8 VDC (11.2 V–14.6 V)
Output Current	10A
Power Consumption In Idle	<50 uA
<b>Solar Panel</b>	
Type	Monocrystalline silicon
Max. Power	100Wp
Efficiency	≥19%
<b>Battery</b>	
Type	Lithium iron phosphate
Nominal Capacity (20°C/68°F, 5 h)	40Ah
Low Temperature Discharge Performance	≥70% nominal capacity (–20 °C [–4 °F], 5 hr)
Normal Temperature Discharge Performance	≥99% nominal capacity (25 °C [77 °F], 5hr)
High Temperature Discharge Performance	≥90% nominal capacity (55°C [131 °F], 5hr)
Upper Limit of Charging Voltage	14.6V
Max. Charging Current	10A
Charge and Discharge Cycle Times	>500 times
<b>Protection</b>	
Over Discharge Protection Voltage	11.2V
Low Temperature Charging Inhibition	0°C(32 °F)
Low Temperature Discharging Inhibition	–20°C(–4 °F)
Protection	IP66
Others	Protection against overheating overcharging, overloading and short circuits.
<b>Port</b>	
Power Output Port	DC12V (5.5/2.1mm interface)
RS-485	1
<b>Structure</b>	
Main Body Material	Photovoltaic panel frame: aluminum alloy Battery compartment: PC and ASA Bracket: Q235
Installation	Column-shaped vertical pole (Φ80 mm–114 mm)
Product Dimensions	765 mm * 630 mm * 98 mm (30.12" * 24.80" * 3.85")
Packaging Dimensions	840 mm * 700 mm * 150 mm (33.07" * 27.56" * 5.91")
Net Weight	13.3kg(29.32lb)
Gross Weight	14.9kg(32.85lb)

Specification

Environment	
Operating Altitude	≤3,000 m (9,842.52 ft)
Applicable Area	The device needs to be exposed to direct sunlight for at least 3.5 hours under standard lighting intensity to ensure it operates normally.
Operating Temperature	Charging: 0 °C to + 55 °C (32 °F to +131 °F); the device self-heats when the battery reaches 0 °C Discharging: -20 °C to + 65 °C (-4 °F to 149 °F)
Operating Humidity	10%-90% (RH)
Storage Temperature	-20 °C to +60 °C (-4 °F to +140 °F); the storage time is less than 2 months. -10 °C to +25 °C (+14 °F to +77 °F); the storage time is less than 12 months.
Storage Humidity	65 ± 20% (RH)
Anti-corrosion Level	Basic Protection

## Dimension



Weight: 14.9 kg (32.84 lb)

## Package Contents



Fully Integrated Solar Panel



Pole Mount Bracket



Bracket Adjuster



Mounting Screws



User Manual

*\*Disclaimer: Technical specifications may subject to change without prior notice*